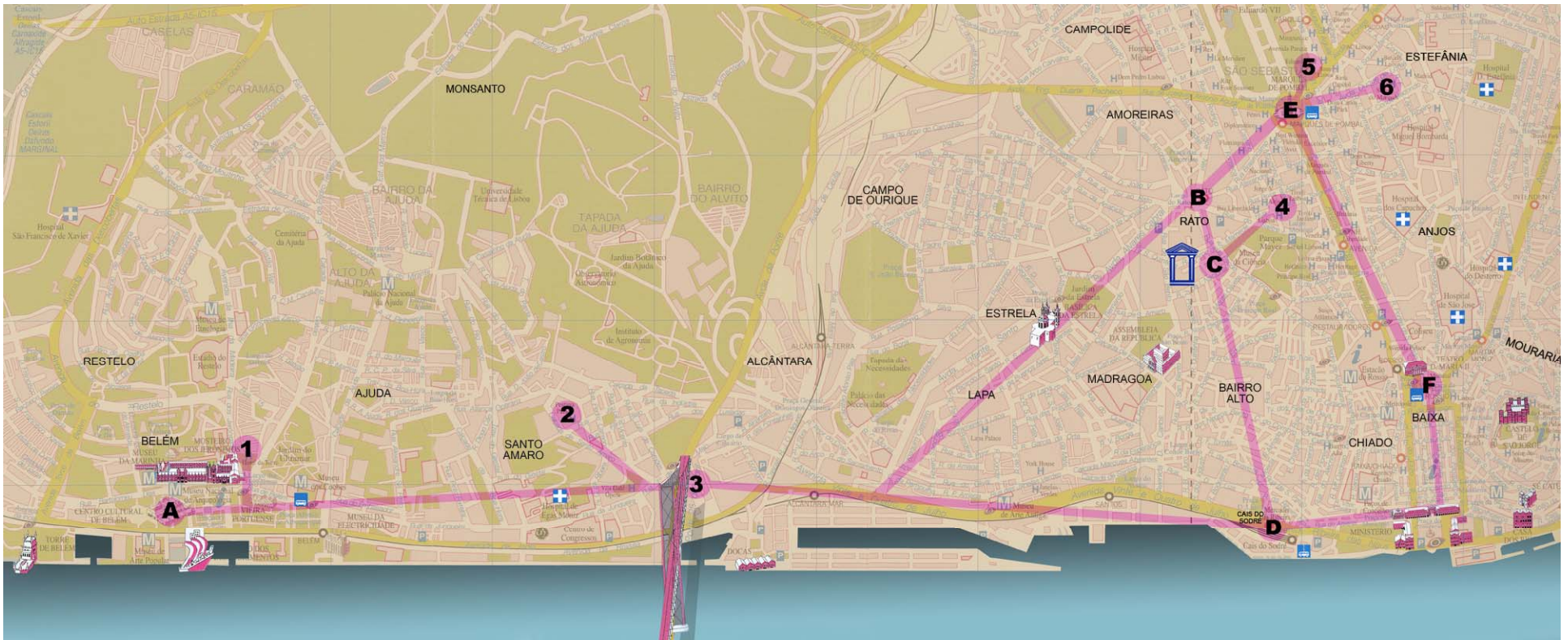


# Lisbon



## From your hotel to the EADTU conference venue – Centro Cultural de Belém

- 1: HOTEL DOS JERÓNIMOS: walking distance
- 2: HOTEL PESTANA –walk to Santo Amaro plus bus 727, 751, tram 15
- 3: HOTEL VILA GALÉ – bus 28, 751, 727, tram 15
- 4: HOTEL IBIS
  - a) subway “Avenida” to “Cais do Sodré” plus tram 15 or bus 28;
  - b) bus 36, 44, 45, 732 plus tram 15 or bus 28
- 5: HOTEL EDUARDO VII
  - a) bus 36, 44, 45, 732 to Cais do Sodré plus tram 15 or bus 28;
  - b) subway “Marquês de Pombal” to “Cais do Sodré” plus tram 15 or bus 28
- 6: HOTEL EMBAIXADOR – bus 727 or subway “Marquês” to “Cais do Sodré” plus tram 15 or bus 28

**A: CENTRO CULTURAL DE BELÉM**

**B: RATO**

**C: UNIVERSIDADE ABERTA**

**D: CAIS DO SODRÉ**

**E: MARQUÊS DE POMBAL**

**F: PRAÇA DA FIGUEIRA**